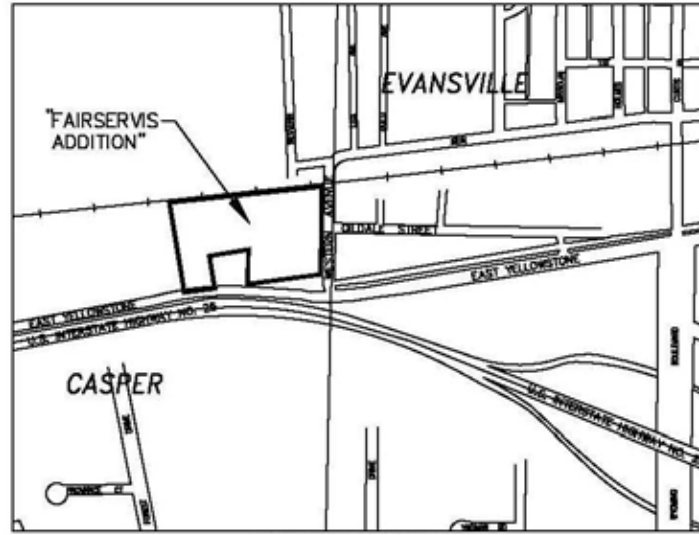


INDUSTRIAL PARK LAND

East Yellowstone/ Fairservis Addition



Address:..... Casper, WY (Natrona County)
Description:..... Lots vary in size with total acreage of 5.54
Zoning:..... Light Industrial
Other:..... Water, electric and sewer on-site

Location:

The property is ideally located with easy access to I-25 and Hwy 20-26. There is rail service to the industrial park. Approximately 15 miles from the Casper/Natrona County International Airport.

Price:

Sale Price is determined by location and size of lot

Property Contact:

Bob West
Granite Peak Development
PO Box 51568
Casper, WY 82605

Phone: (307) 472-7275
Fax: (307) 235-1485

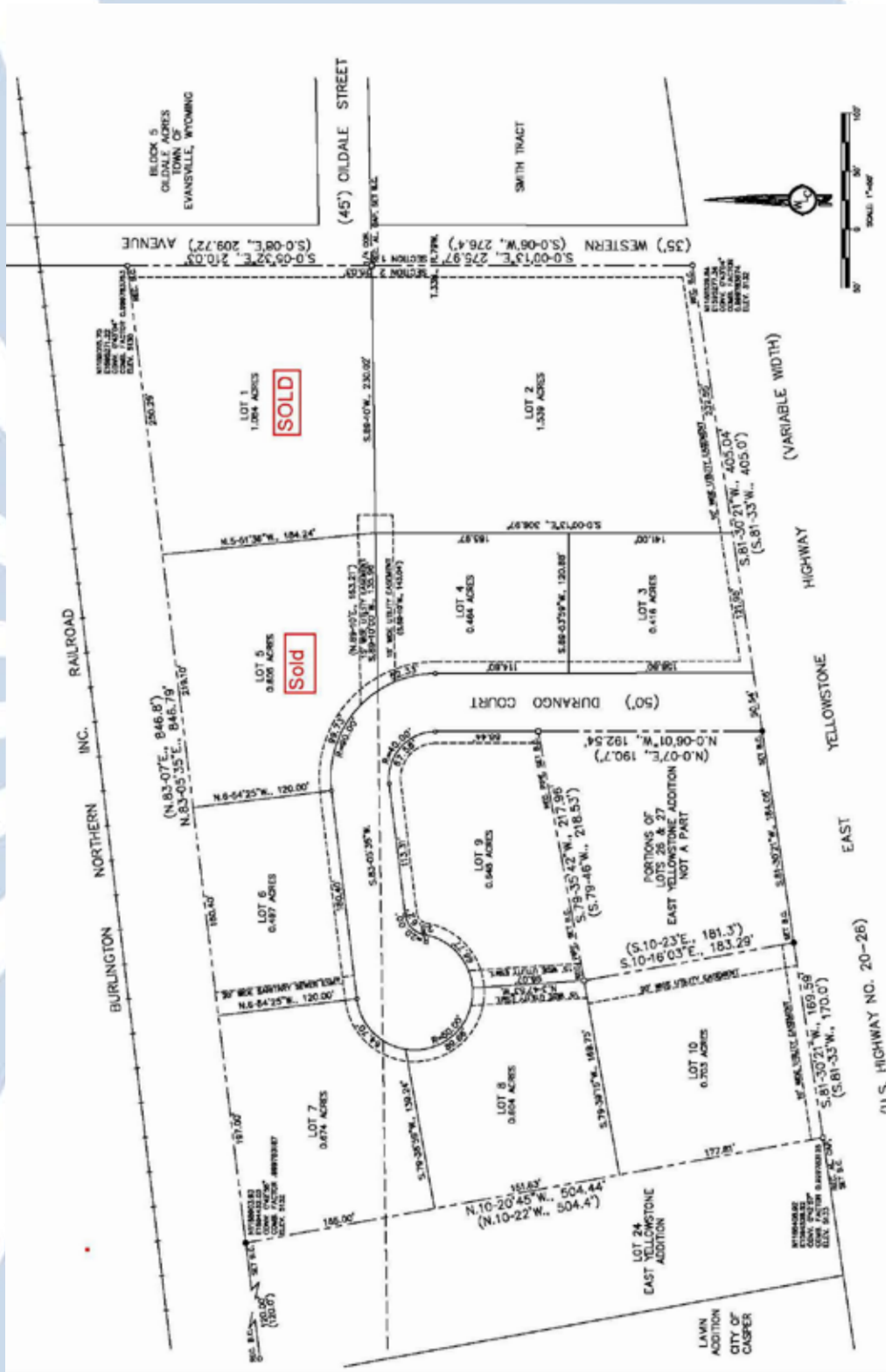


Sources of property information are deemed reliable. CAEDA makes no guarantee or representation about the accuracy or completeness of the information presented.

Casper Area Economic Development Alliance

SITE INFORMATION

East Yellowstone/ Fairservis Addition

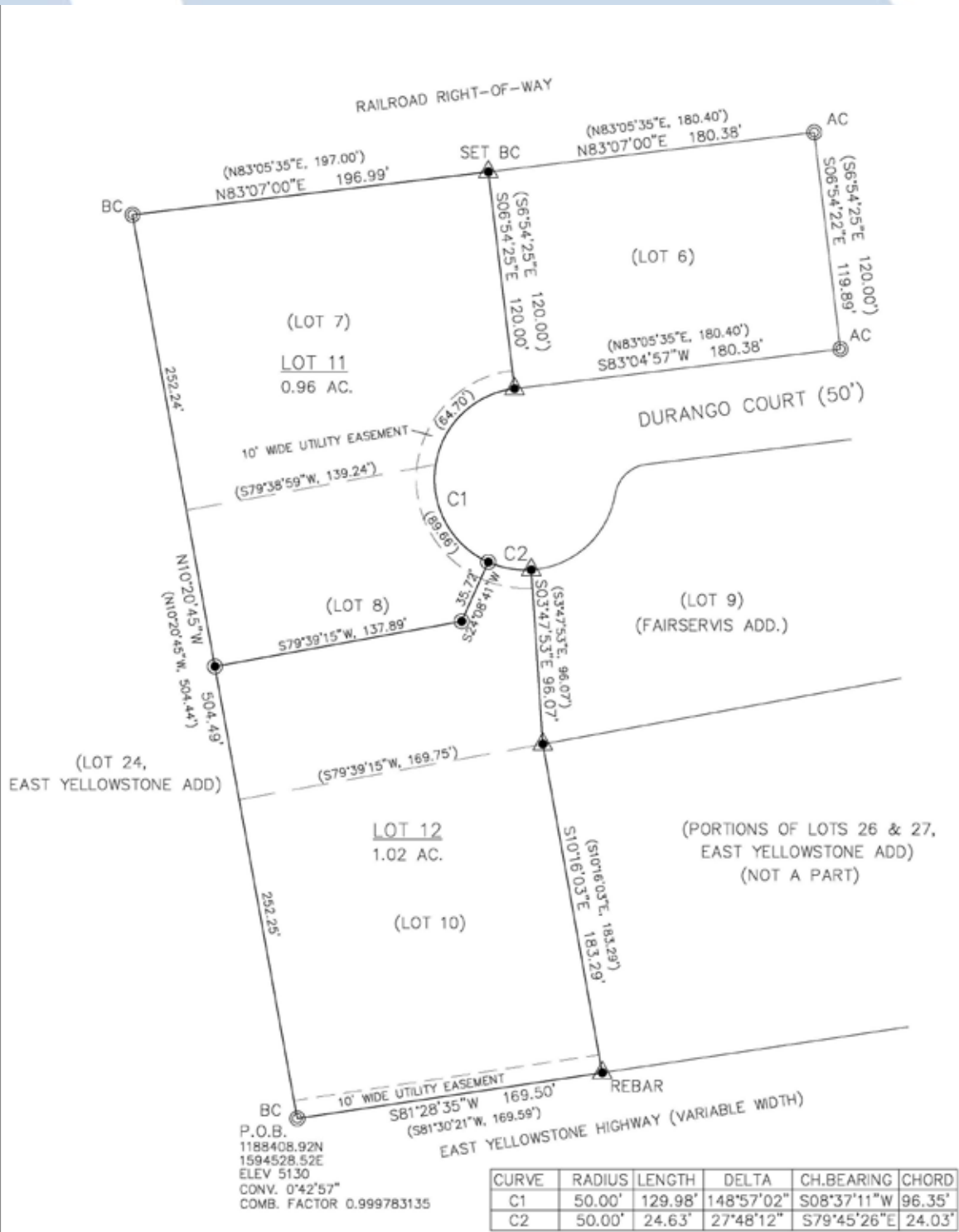


Sources of property information are deemed reliable. CAEDA makes no guarantee or representation about the accuracy or completeness of the information presented.

Casper Area Economic Development Alliance

SITE INFORMATION

East Yellowstone/ Fairservis Addition



Sources of property information are deemed reliable. CAEDA makes no guarantee or representation about the accuracy or completeness of the information presented.

Casper Area Economic Development Alliance

INDUSTRIAL PARK LAND

East Yellowstone/ Fairservis Addition



LOCATION & VICINITY MAP
NO SCALE



Sources of property information are deemed reliable. CAEDA makes no guarantee or representation about the accuracy or completeness of the information presented.

Casper Area Economic Development Alliance