

# INDUSTRIAL PARK LAND

## Cole Creek Industrial Park



Address:.....Evansville, WY (Natrona County)  
Description:.....Approximately 65.26 acres available  
Utilities:.....Water, Electricity, Gas, Sewer, Telephone, Internet to site  
Zoning:..... Industrial  
Other:..... Owners will consider build-to-suit projects

### Location:

The property is ideally located with easy access to I-25 and Hwy 20-26. There is rail service to the industrial park.

### Price:

Sale..... Predicated on location and size of lot(s)

### Property Contact:

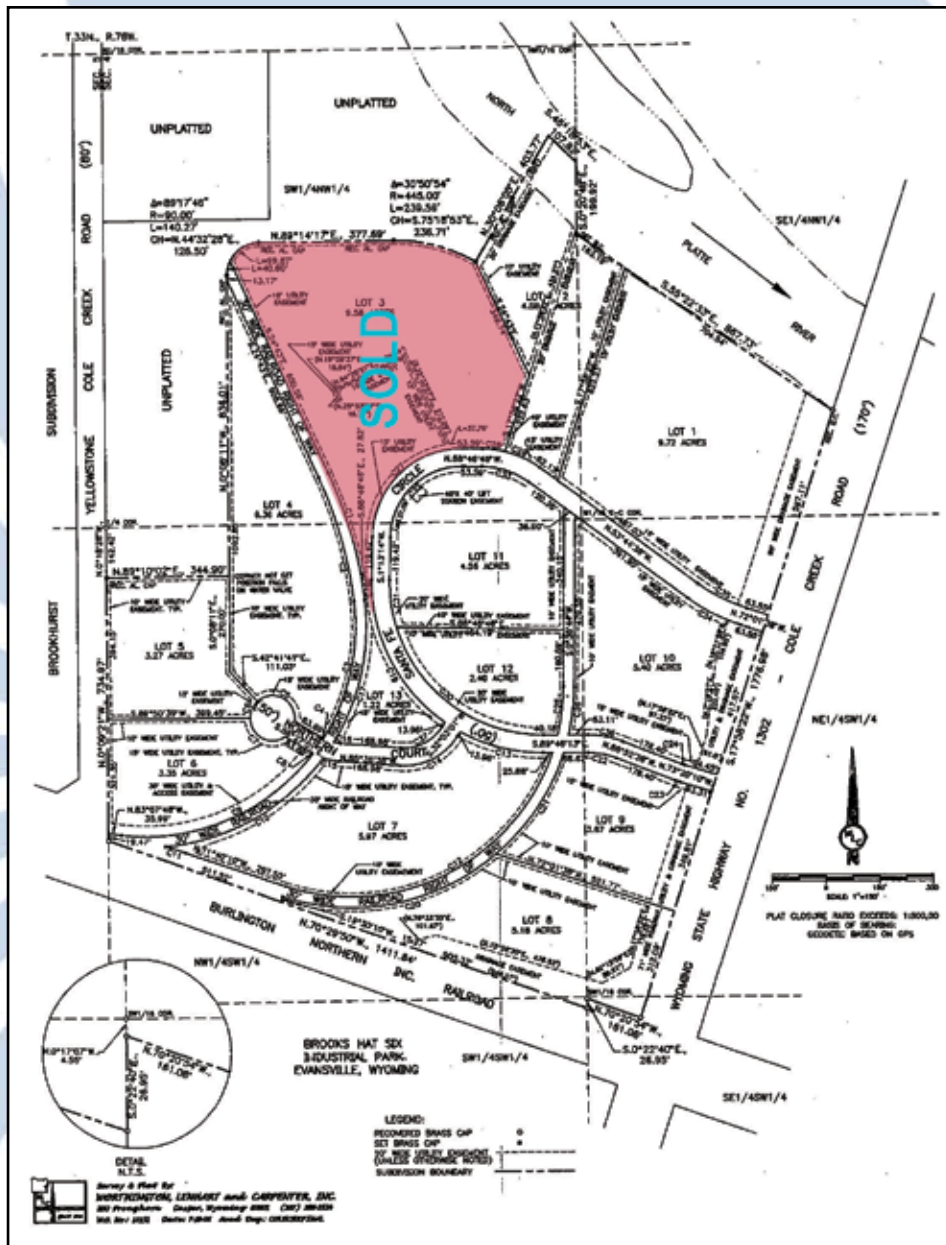
Bob West  
Granite Peak Development  
PO Box 51568  
Casper, WY 82605

Phone: (307) 472-7275  
Fax: (307) 235-1485



# INDUSTRIAL PARK LAND

Cole Creek Industrial Park (p. 2)



# INDUSTRIAL PARK LAND

Cole Creek Industrial Park (p. 3)

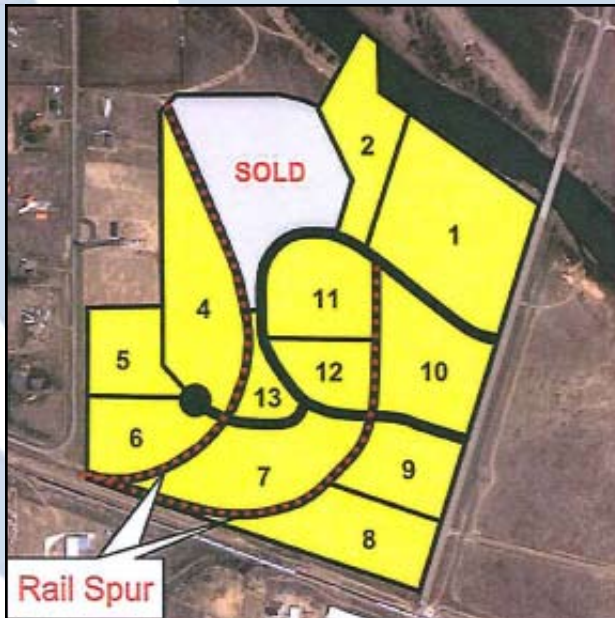


Aerial view of Cole Creek Industrial Park (the building in the upper left of the park is PolyPipe, all other lots are available but temporarily storing pipe for another company).



# INDUSTRIAL PARK LAND

Cole Creek Industrial Park (p. 4)



LOT 1	9.72 Acres.....	\$1,270,209.00
LOT 2	4.58 Acres.....	\$598,514.00
LOT 3	.....	SOLD
LOT 4	6.36 Acres.....	\$761,864.40
LOT 5	3.27 Acres.....	\$427,323.00
LOT 6	3.35 Acres.....	\$474,259.00
LOT 7	5.97 Acres.....	\$715,146.00
LOT 8	5.18 Acres.....	\$902,563.20
LOT 9	3.67 Acres.....	\$479,595.60
LOT 10	5.40 Acres.....	\$705,672.00
LOT 11	4.56 Acres.....	\$546,242.00
LOT 12	2.40 Acres.....	\$287,496.00
LOT 13	1.22 Acres.....	\$159,430.00



CAEDA makes no guarantee or representation about the accuracy or completeness of the information presented.

Casper Area Economic Development Alliance